

Analog Devices Welcomes Hittite Microwave Corporation

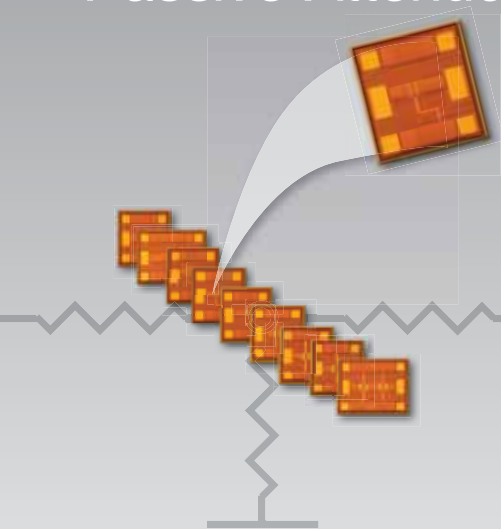
NO CONTENT ON THE ATTACHED DOCUMENT HAS CHANGED



THIS PAGE INTENTIONALLY LEFT BLANK

DESIGNER'S KIT

Passive Attenuator Chips, DC - 50 GHz



This Passive Attenuator Chip Designer's Kit HMC-DK006 includes 9 of our new Passive Attenuator ICs. The table below summarizes the features of each of the products included in this kit. These through lines and Passive Attenuators are wideband, fixed value 50 Ohm matched ICs which offer relative attenuation levels of 0, 2, 3, 4, 6, 10, 15 and 20 dB. They are ideal for microstrip, hybrid, and multi-chip module applications where extremely flat attenuation, and excellent VSWR vs. frequency are required. These wideband attenuators feature low inductance on-chip vias, and require no additional ground connections. The HMC650 through HMC658 are backside metallized with gold, and are suitable for eutectic or epoxy die attach.

Hittite's line of Passive Attenuator chips are ideal for Fiber Optics, Microwave Radio, Military & Space Hybrids, Test & Measurement, Scientific Instruments and RF/Microwave Circuit Prototyping applications from DC to 50 GHz. The data sheet for these products is available on the enclosed CD, or on-line at www.hittite.com.

HMC-DK006 – PASSIVE ATTENUATOR CHIPS, DC - 50 GHz

Part Number	Frequency (GHz)	Function	Attenuation Accuracy (dB)	Nominal Attenuation (dB)	Maximum Input Power (dBm)	Chip Size mils (mm)	Package	Quantity
HMC650	DC - 50	Thru Line	±0.2	0.15	-	20 x 21 x 4 (0.51 x 0.54 x 0.1)	Chip	10
HMC651	DC - 50	Thru Line	±0.3	0.15	-	26 x 21 x 4 (0.66 x 0.54 x 0.1)	Chip	10
HMC652	DC - 50	Passive	±0.2	2	27	20 x 21 x 4 (0.51 x 0.54 x 0.1)	Chip	10
HMC653	DC - 50	Passive	±0.2	3	26	20 x 21 x 4 (0.51 x 0.54 x 0.1)	Chip	10
HMC654	DC - 50	Passive	±0.2	4	25	20 x 21 x 4 (0.51 x 0.54 x 0.1)	Chip	10
HMC655	DC - 50	Passive	±0.2	6	26	20 x 21 x 4 (0.51 x 0.54 x 0.1)	Chip	10
HMC656	DC - 50	Passive	±0.1	10	25	20 x 21 x 4 (0.51 x 0.54 x 0.1)	Chip	10
HMC657	DC - 50	Passive	±0.4	15	25	20 x 21 x 4 (0.51 x 0.54 x 0.1)	Chip	10
HMC658	DC - 50	Passive	±0.5	20	25	26 x 21 x 4 (0.66 x 0.54 x 0.1)	Chip	10